

Helping Surgeons

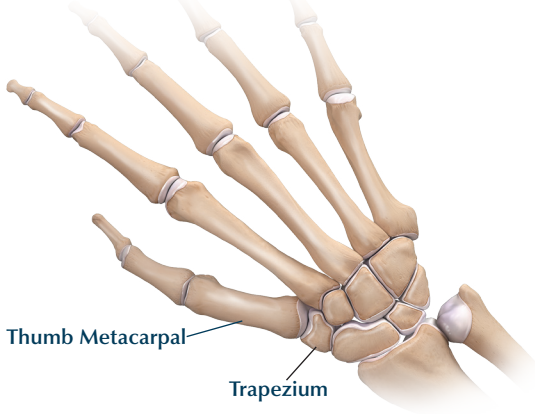
Treat Their Patients Better™

Basal Joint

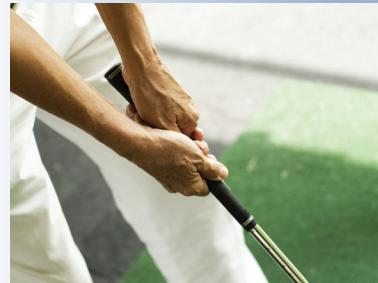
Arthritis

CMC Mini TightRope®

Anatomy



To learn more about Basal Joint Arthritis and other orthopedic procedures, please visit our website www.arthrex.com.



What is Basal Joint

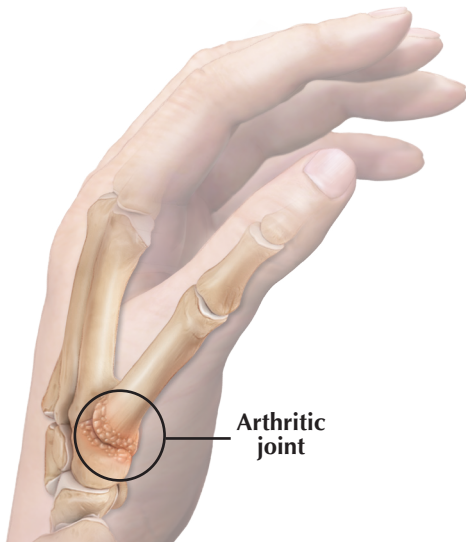
Arthritis?

Basal Joint Arthritis, also known as thumb carpometacarpal (CMC) joint arthritis, is a degenerative condition affecting a joint at the base of the thumb. The thumb CMC joint is comprised of the first metacarpal and trapezium bones, which are located at the base of your thumb.

Arthritis of this joint leads to the loss of cartilage, which covers the ends of the bones and allows the bones to move smoothly against each other. When the cartilage is damaged, the bones rub together during joint motion which can lead to pain and loss of strength.

Non-operative treatment options include splinting, analgesic medications and cortisone injections. When non-operative treatment is no longer effective, surgical treatment may be an effective option.

Common surgical treatment to alleviate the pain associated with this condition is partial or complete removal of the arthritic trapezium bone. In order to stabilize the thumb after removal of the bone, your surgeon will discuss options including the CMC Mini TightRope[®] procedure presented here.



Arthrex CMC

Mini TightRope[®]

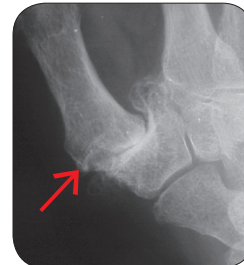


The CMC Mini TightRope procedure allows the surgeon to stabilize the thumb with a strong suture and small buttons following removal of the trapezium bone. The removal of the trapezium helps to relieve the pain due to “bone-on-bone” grinding.

A suture construct is passed through the first and second metacarpal bones and secured with buttons on each side. This suture provides immediate support and the patient's own tendon is not used.

Immediately after surgery, your hand will be wrapped and splinted. You will begin physical therapy anywhere from 7 to 14 days after surgery (postoperatively).

Preoperative



Postoperative

