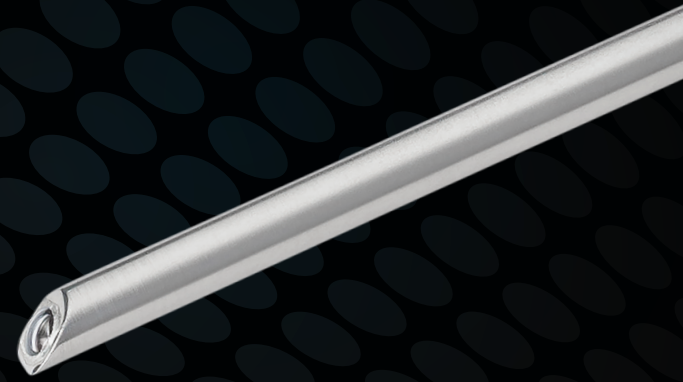
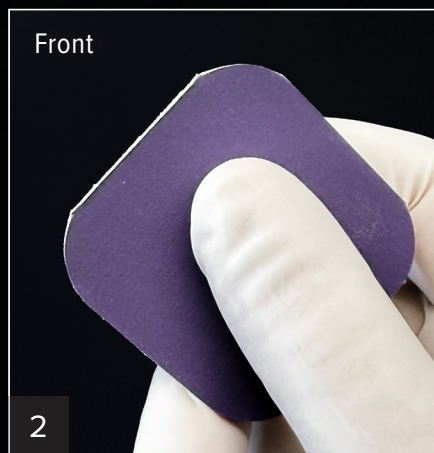


How to Use Your Polishing Pad

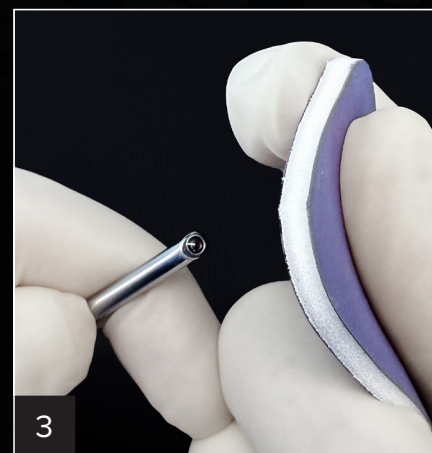
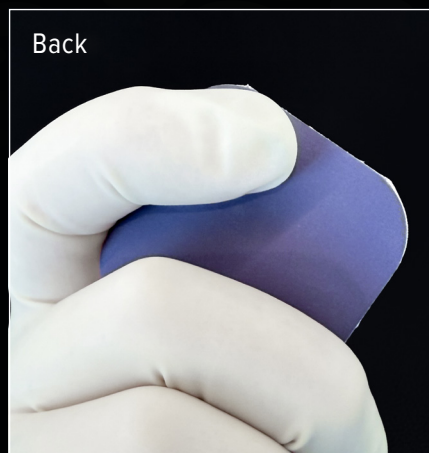
User Guide



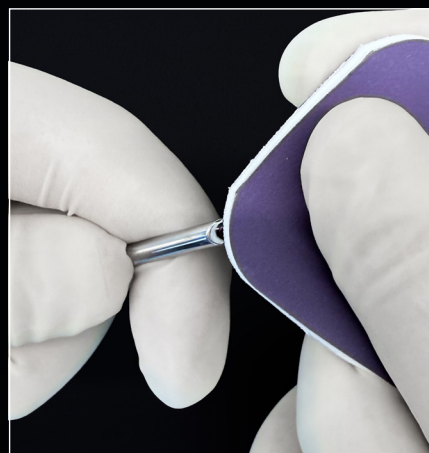
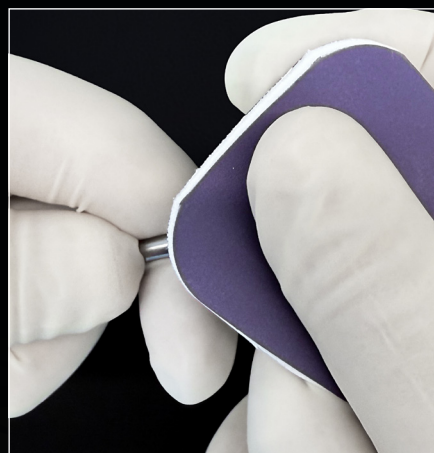
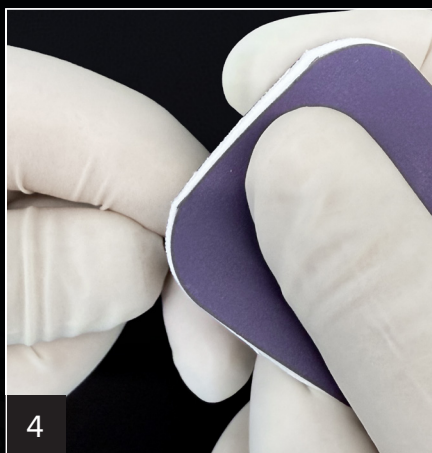
1
Grasp the distal end of the scope so your index finger is supporting the back side of the scope tip.



2
Hold the polishing pad firmly between the thumb and the index and middle fingers of your opposite hand.



3
With steady and moderate pressure, place the polishing pad against the distal window of the arthroscope.



4
Maintain consistent pressure from the polishing pad onto the distal window of the arthroscope as you “drag” the polishing pad across the window. Repeat 5 to 10 times.

Perform a visual check when possible and repeat as needed prior to your remaining sterilization protocol.