

Arthroscopy Limb Positioners

for Hip, Knee, Distal Extremities, and Shoulder



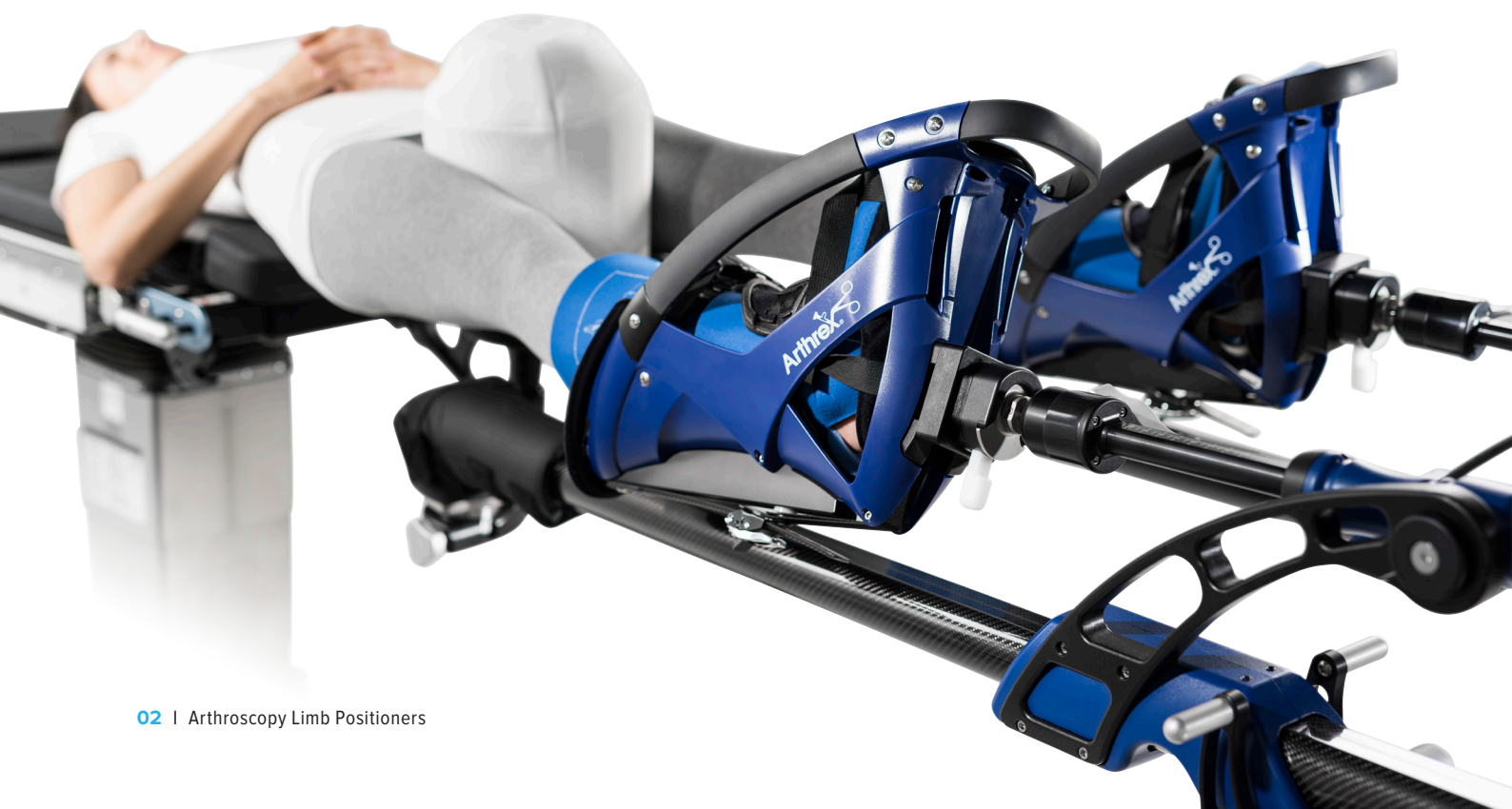
Arthrex® 

Hip Distraction System (HDS)

The lightweight yet rigid hip distraction and positioning system attaches to all major OR beds via Clark rail adapters and is simple and straightforward for one person to assemble in seven easy steps. Both leg spars provide precisely controlled lower extremity positioning and traction over the unique perineal post system to facilitate pelvic balancing and safe distraction during open and arthroscopic hip procedures.

The novel foot boots provide multidirection stability of the calf, foot, and ankle under traction to prevent heel lift and can be detached and controlled during the procedure to check hip range of motion after osteoplasty and soft-tissue reattachment and reconstruction procedures. All of the components of the HDS disassemble and store neatly and securely on a rolling storage cart.

- HDS (AR-6529S)



Knee Positioning

PivotPost (AR-1560)

The PivotPost is a lateral post that moves in three planes, making it easy to place in the proper position to the patient and pivot out of the way when not in use. The unique over-the-top sweeping design prevents the patient's leg from moving over the post when valgus stress or a figure-four position is applied. The ergonomic, oversized buttons are located under the drape. Disposable pads for patient comfort are easily applied and removed. The PivotPost attaches simply to an OR bed with its custom Clark rail adaptor.

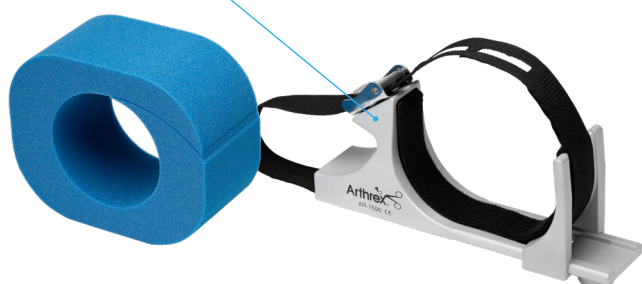


Low-Profile Leg Holder (AR-1500)

Designed with an internal Velcro® lining to accommodate a pressure tourniquet or foam insert, the low-profile leg holder provides secure control of the thigh during varus/valgus manipulation or internal/external lower leg rotation.

Incorporating the tourniquet in the leg holder provides maximum exposure of the distal thigh for arthroscopic ACL reconstruction procedures.

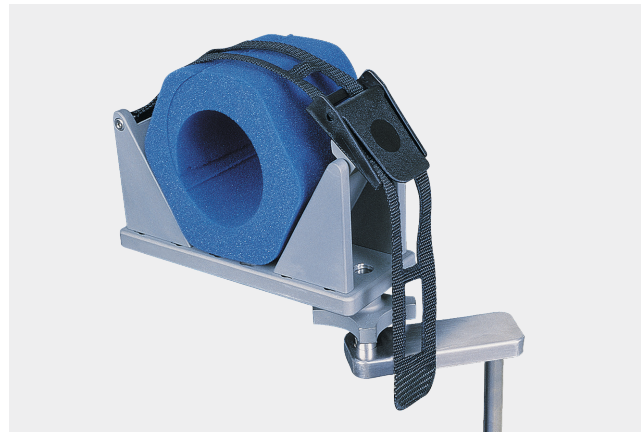
Adjustable strap accommodates circumferential compression for multiple limb sizes. The disposable foam pad ensures sterility for every patient.



Small Joint Holders

Designed in conjunction with Champ L. Baker Jr, MD (Columbus, GA), the small joint limb holder provides a stable platform for arthroscopy or open procedures of the elbow and ankle. It mounts conveniently on surgical tables and adjusts for height, width, and rotation to maximize visualization and limb stability. The internal tourniquet option facilitates controlled visualization when conversion is made to an open procedure.

The adjustable side supports accommodate multiple limb sizes with either a disposable foam cushion or pressure tourniquet.

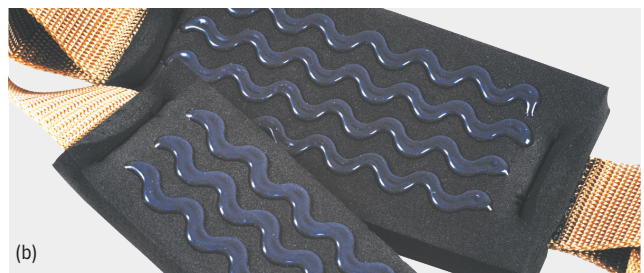
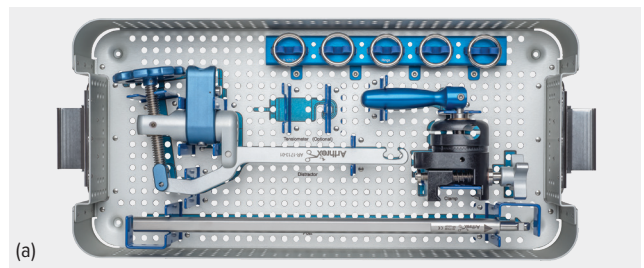


Noninvasive Ankle Distractor Set (AR-1713S) (a)

An innovative design removes the distractor mechanism away from the surgeon and allows ease of tensioning with the ergonomic tensioning wheel.

Ankle Arthroscopy Distractor Features:

- Clark rail adapter allows ease of attachment to bed rails even over multiple drapes
- Offset tensioning wheel allows easy control of distraction while remaining out of the surgeon's working area
- Available with tensiometer to dial-in precise distraction for every case
- Simple setup and fully sterilizable with case
- Clips onto the ankle distraction strap



Ankle Distraction Strap (AR-1712)



The noninvasive ankle distraction strap is designed to cradle the foot for safe soft-tissue distraction. Made of strong nylon strapping material with soft, nonslip foam pads (b) for patient comfort and secure hold, this easy-to-use, one-size-fits-all device offers effective traction and grip, a distinct advantage over current distraction devices.

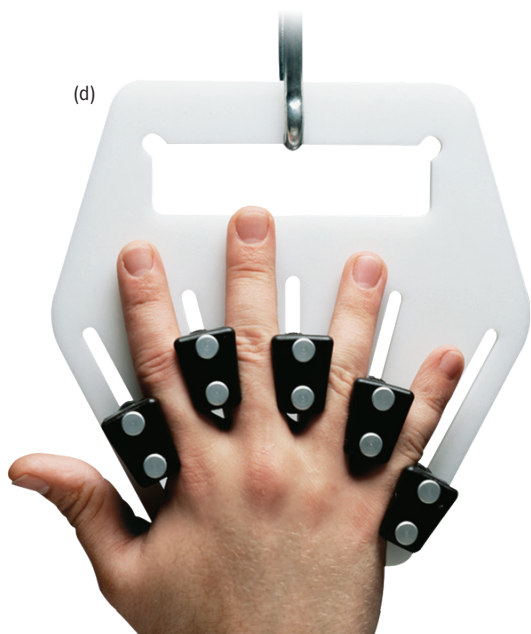
Hand and Wrist Traction

Designed in conjunction with David M. Auerbach, MD (Van Nuys, CA), the wrist traction tower facilitates arthroscopic surgery of the wrist by maintaining the arm in a position comfortable for the patient and accessible to the surgeon.

The tower provides traction at the fingers using sterile finger traps available in four sizes. A countertraction boom at the upper arm allows distraction and stable positioning of the wrist for operative procedures, including closed reduction of fractures with pins or external fixation.

The wrist traction tower can be used for wrist arthroscopy to treat injuries to the triangular fibrocartilage complex, ligaments, and bone. One procedure in particular, the ulnar head wafer procedure, involves burr resection of a few millimeters of the ulnar head. This must be done through full rotation of the wrist (supination and pronation). The hand stabilizer post helps hold the wrist from full pronation to full supination, freeing the surgeon's hands to facilitate the procedure. Designed as a safe, effective alternative to finger traps, the atraumatic hand holder provides secure, comfortable traction for any upper extremity distraction or manipulation. It easily hooks onto the wrist tower or the shoulder traction device (see next page).

- Wrist traction tower (AR-1611S) (a)
- Single-use sterile finger traps and hand pads (b)
- Radiolucent hand stabilizer snaps easily onto the wrist traction tower after autoclaving (c)
- Atraumatic hand holder traction attachment (d)



Shoulder Suspension System

The Arthrex Shoulder Suspension System for lateral decubitus positioning is designed to be simple and intuitive while providing optimal visualization during arthroscopic shoulder procedures.

■ Shoulder Suspension System (AR-1650S)



Easy to assemble, lightweight, and simple to set up; no batteries, hoses, cords, or foot pedals required.

Direct lateral joint distraction is easily applied with a simple padded strap.

Intraoperative control of abduction, internal/external rotation, and lateral traction.



Sterile control of internal/external rotation frees staff to focus on the procedure instead of manual positioning.



Intraoperative control of abduction/adduction for ultimate management of direct positioning. The arm can easily be disconnected and reconnected to allow full range-of-motion testing.



Direct lateral joint distraction is easily applied and can be directed anterior or posterior with a safe and secure padded strap.

Shoulder Suspension System (Cont)



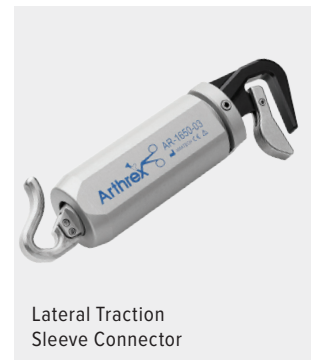
Arm Sleeve



Lateral Traction Sling



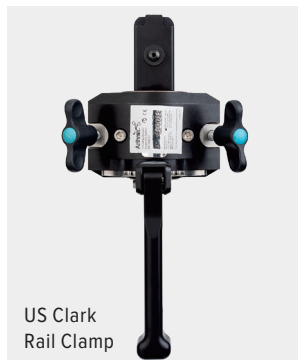
Arm Sleeve Connector



Lateral Traction Sleeve Connector



Weight



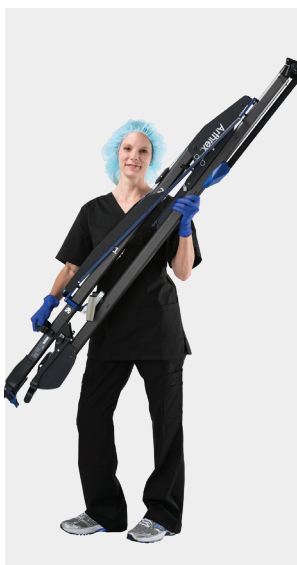
US Clark Rail Clamp



Shoulder Suspension Tower

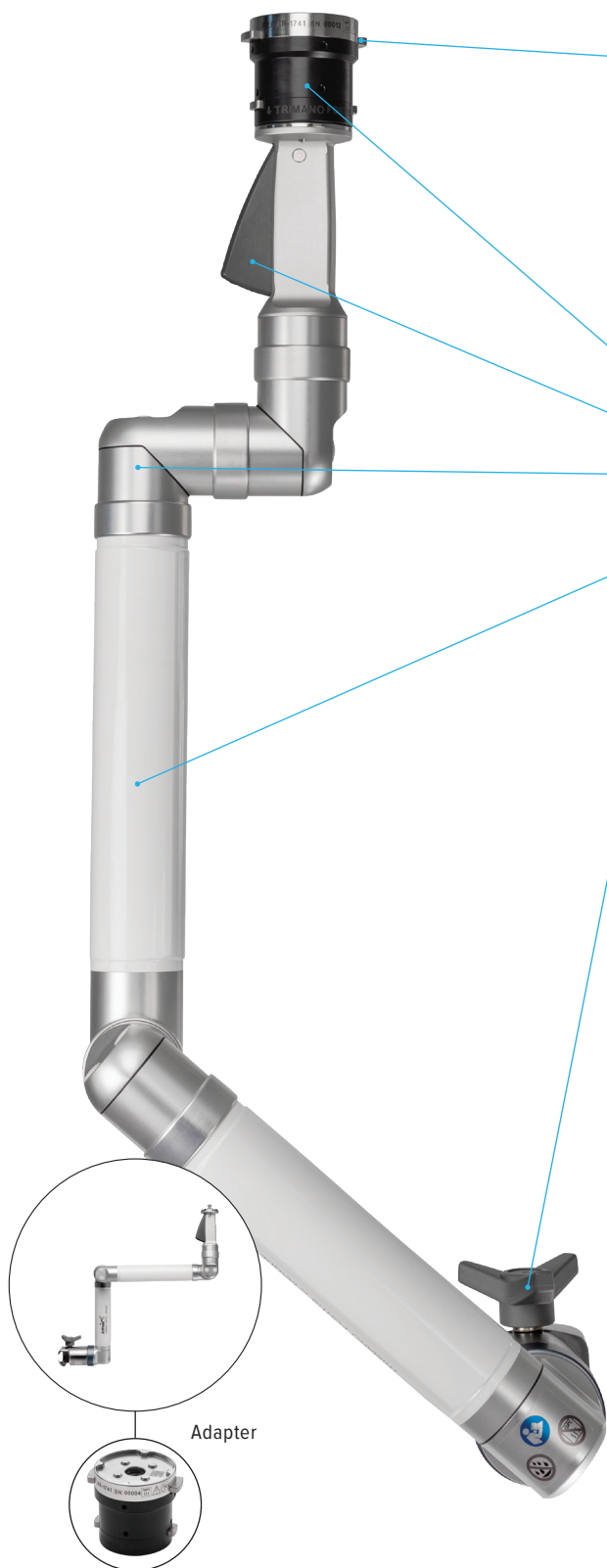


Storage Cart



Lightweight, simple to set up, and easy to fold for storage on a convenient cart with a small vertical footprint.

TRIMANO FORTIS®* Support Arm



Optimized Workflows

- Lock and unlock the sterile limb holder during operations when needed to manipulate
- Surgical team's "third hand"; allows critical OR staff to focus on the procedure and not patient positioning
- Unrestricted access to the surgical field

Flexible Limb Positioning

- One single sterile adapter for all applications
- Light-touch handle for effortless adjustments
- Strong for precise and secure sterile positioning

Simple to Use

- Compact and lightweight
- No need for batteries, hoses, cables, or foot pedals
- Easily attached to any OR table rail and ready for immediate use
- Intuitive operation; all required disposable articles are contained in convenient sterile kits

Shoulder and Elbow



Wrist



Knee



Open and General Surgery



- TRIMANO FORTIS Support Arm (AR-1740)

*TRIMANO FORTIS is a registered trademark of Maquet GmbH.

TRIMANO FORTIS® Support Arm (Cont)



Shoulder

TRIMANO®* Beach Chair Kit allows for quick and easy patient preparation while gently protecting the operative arm.



Elbow

TRIMANO Elbow Kit for arthroscopic or open elbow procedures in the lateral or prone position allows complete control of a patient's elbow.



Wrist

TRIMANO Wrist Positioner is a radiolucent Weinberg finger fixation device that allows for x-ray imaging and is ideal for wrist arthroscopy, distal radius fractures, and other open wrist procedures.



Knee

TRIMANO FORTIS Knee Kit is ideal for holding a varus or valgus force, improving compartment visualization during knee arthroscopy, and supporting the limb during partial or total knee arthroplasty.



Open Surgery

TRIMANO Synergy camera head holder can help document open cases just like arthroscopic cases.



Accessories

TRIMANO drape is also available separately and sterile for use with reusable accessories (eg, wrist positioner and camera holder).

*TRIMANO is a registered trademark of Maquet GmbH.

Lift-Assist Beach Chair Positioner System

Easy-to-Use and Protective Head Positioning

- Universal Head Positioner (UHP), single-use, simple to apply disposable kit
- Comfortable and secure
- Free-sliding head positioner protects the patient's neck when raising and lowering the table

Unobstructed Posterior and Lateral Access

- Completely removable fold-away shoulder panels
- Clear access to the operative shoulder

Lightweight With Lift-Assist

- Quick and easy patient repositioning
- Lift-assist piston supports up to 80 lb (36.3 kg) of the patient's upper body weight, enabling nearly effortless positioning
- Class leading 500 lb (226.8 kg) patient weight limit
- Lateral slide feature enables the surgeon to move the patient closer to the edge of the OR table for increased surgical site access
- Lightweight, under 30 lb (13.6 kg) without panels



■ Lift-Assist Beach Chair (AR-1627)



Easy to adjust and position with lift-support pistons.



Safe and supportive. Simple adjustments can be made using the lift-support handle.



Lies flat for anesthesia access.

Lift-Assist Beach Chair Positioner System (Cont)



Ordering Information

Hip Distraction System (AR-6529S)

Product Description	Item Number
HDS Patient Platform	AR-6529-01
HDS Patient Platform Pad	AR-6529-02
HDS Prep Table	AR-6529-03
HDS Prep Table Pad	AR-6529-04
HDS Operative Leg Spar, long	AR-6529-05L
HDS Traction Boot, qty. 2	AR-6529-06
HDS Perineal Post	AR-6529-07
HDS Perineal Post Pad	AR-6529-08
HDS Table Clamp (US), qty. 2	AR-6529-09
HDS Well Leg Spar, long	AR-6529-14L
HDS Well Leg Spar Adapter	AR-6529-15
Additional Components	
HDS Operative Spar Cover	AR-6529-12
HDS Storage Cart	AR-6529-13
HDS Stabilizer Leg	AR-6529-16
HDS Traction Boot Replacement Pads Kit	AR-6529-17
HDS Perineal Post Pad, dense	AR-6529-21
Single-Use Disposables	
HDS Disposables Kit	AR-6529-11
International Rail Clamps	
HDS Table Clamp (EU), qty. 2	AR-6529-10
HDS Table Clamp (UK), qty. 2	AR-6529-18
HDS Table Clamp (DEN), qty. 2	AR-6529-19
HDS Table Clamp (JP), qty. 2	AR-6529-20

Knee Positioners

Product Description	Item Number
PivotPost and Clamp	AR-1560
PivotPost Disposable Pad, nonsterile	AR-1560-01
Low-Profile Leg Holder	AR-1500
Foam Cushion Insert for Leg Holder, qty. 5	AR-1502
Easy Lock Socket	AR-1627-12

Noninvasive Ankle Distractor Set (AR-1713S)

Product Description	Item Number
Distractor Head	AR-1713-01
Distractor Post	AR-1713-02
Bed Rail Clamp	AR-1713-03
Ankle Distractor Instrument Case	AR-1713C
Optional	
Tensiometer	AR-1713-04
Ankle Distraction Strap, nylon (to be used with AR-1713S)	AR-1712
Ankle Distraction Strap, cotton, waistband (for use without the Ankle Distractor)	AR-1710
Small Joint Limb Holder	AR-1506
Foam Insert for Small Joint Limb Holder, qty. 5	AR-1507

Wrist Traction Tower (AR-1611S)

Product Description	Item Number
Finger Distraction Attachment	AR-1614
Foam Insert for Countertraction Boom, qty. 5, single use	AR-1615
Finger Traps, small, sterile, qty. 5, single use	AR-1616-S
Finger Traps, medium, sterile, qty. 5, single use	AR-1616-M
Finger Traps, large, sterile, qty. 5, single use	AR-1616-L
Finger Traps, x-large, sterile, qty. 5, single use	AR-1616-X
Foam Hand Pads, sterile, qty. 5, single use	AR-1617
Atraumatic Hand Holder Traction Attachment	AR-1602D

Shoulder Suspension System (AR-1650S)

Product Description	Item Number
Shoulder Suspension System, S3 (includes tower, US Clark rail clamp, arm sleeve connector, lateral traction sleeve connector, weight hanger w/ five weights)	
Disposables	
Arm Sleeve, S3 (disposable sleeve, 6 per box)	AR-1651
Lateral Traction Sling, S3 (disposable sling, 6 per box)	AR-1652
Recommended	
Storage Cart	AR-1650-06
Available Separately	
Shoulder Suspension Tower, S3	AR-1650-01
Arm Sleeve Connector, S3	AR-1650-02
Lateral Traction Sleeve Connector, S3	AR-1650-03
Weight Hanger, S3, 10 lb (4.5 kg)	AR-1650-04
Weight, single, S3, 2.5 lb (1.1 kg) each	AR-1650-05
US Clark Rail Clamp, S3	AR-1650-07

TRIMANO FORTIS® Support Arm

Product Description	Item Number
TRIMANO FORTIS Support Arm	AR-1740
TRIMANO FORTIS Adapter	AR-1741
TRIMANO® Beach Chair Kit (box of 6)	AR-1644
TRIMANO Elbow Kit (box of 6)	AR-1646
TRIMANO Wrist Positioner	AR-1647
TRIMANO Drape (box of 6)	AR-1648
TRIMANO FORTIS Reusable Leg Holder	AR-1747-B
TRIMANO FORTIS Knee Kit (box of 6)	AR-1747
TRIMANO Synergy Camera Head Holder	AR-3210-0010

Ordering Information (Cont)

Lift-Assist Beach Chair Positioner

Product Description	Item Number
Included	
“Lift-Assist” Beach Chair Positioner , includes reusable pad set, intubation pad and plate, beach chair clamps qty. 2, and reusable security strap	AR-1627
Intubation Pad and Plate	AR-1627-10
Reusable Security Strap	AR-1627-15
Rail Clamps (2 ea)	AR-1627-11
Required	
LPS Arm Support	AR-1627-01
Countertraction Strap	AR-1627-03
Easy Lock Socket	AR-1627-12
UHP w/Handles	AR-1627-05
UHP w/out Handles	AR-1627-20
UHP Disposable (box of 10)	AR-1627-06
Recommended	
Reusable Pad Set	AR-1627-09
Cart	AR-1627-13
UHP Replacement Strap	AR-1627-17



This description of technique is provided as an educational tool and clinical aid to assist properly licensed medical professionals in the usage of specific Arthrex products. As part of this professional usage, the medical professional must use their professional judgment in making any final determinations in product usage and technique. In doing so, the medical professional should rely on their own training and experience, and should conduct a thorough review of pertinent medical literature and the product's directions for use. Postoperative management is patient-specific and dependent on the treating professional's assessment. Individual results will vary and not all patients will experience the same postoperative activity level and/or outcomes.

View U.S. patent information at www.arthrex.com/corporate/virtual-patent-marking

arthrex.com

© 2021 Arthrex, Inc. All rights reserved. LB1-0202-EN_O